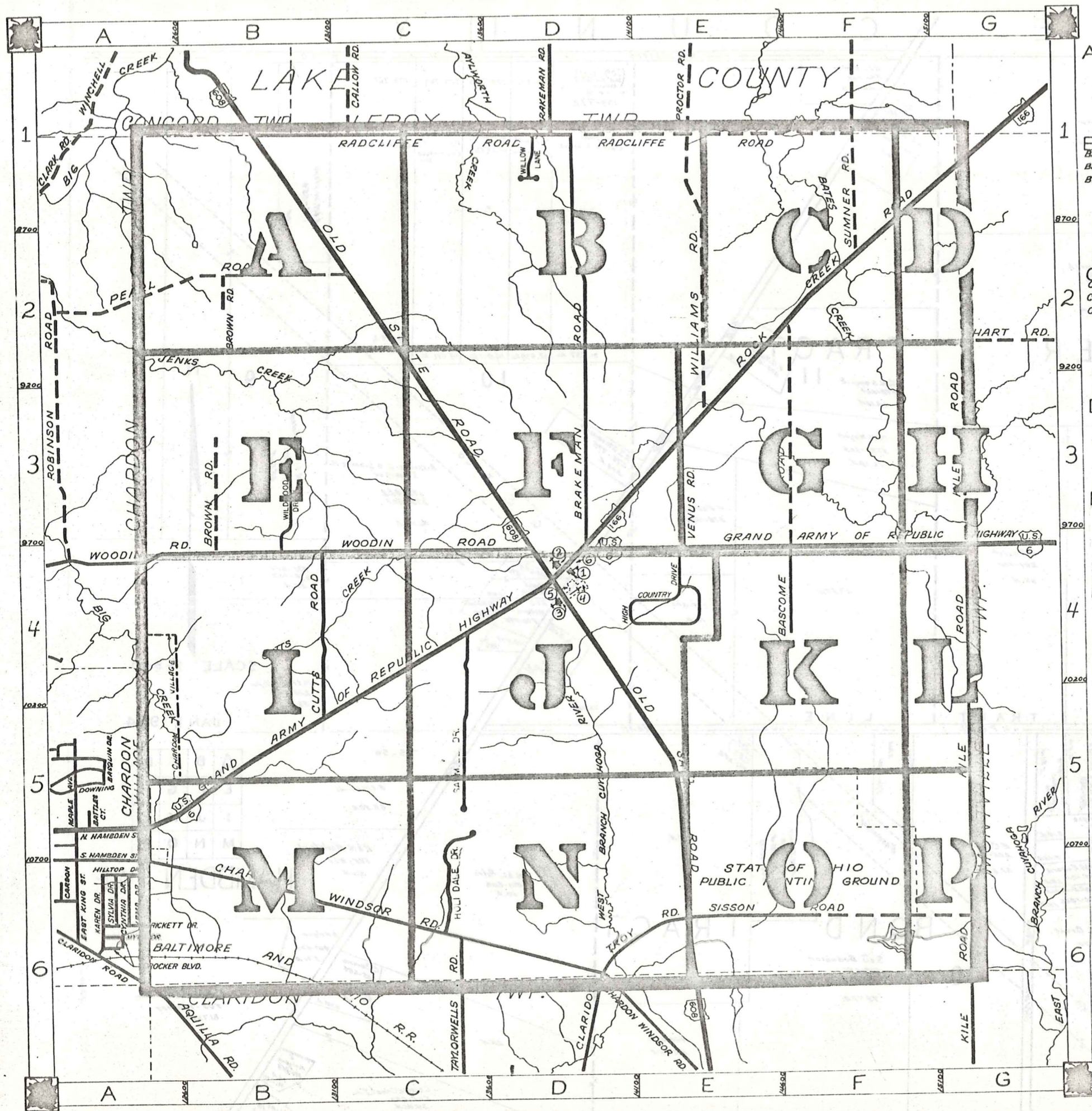


# ROAD INDEX



|   |   |   |
|---|---|---|
| A | I | RADCLIFFE RD. B1 F1   |
| B | J | BASCOMBE RD. F2, F4<br>BRAKEMAN RD. D1, D4<br>BROWN RD. B2, B4                |
| C | K | CHARDON WINDSOR RD. A6, D6<br>CLARIDON TROY RD. D6, E6<br>CUTTS RD. B4, B5    |
| D | L | KILE RD. G2, G6<br>TAYLORWELLS RD. C6   |
| E | M | VENUS RD. E3, E4  |
| F | N | WILLIAMS RD. E1, E3<br>WOODIN RD. A4, D4<br>WILDWOOD DR. B3<br>WILLOW LANE D1 |
| G | O | OLD STATE RD. B1, E6  |
|   | P | G.A.R. (U.S. 6) A5, G4<br>GRANT ST. A5  |
|   | Q | PEARL RD. A2, C2  |
|   | X | HIGH COUNTRY DR. E4   |
|   | Y | HOLI-DALE DR. C6  |
|   | Z |   |

- ① HAMB DEN ELEMENTARY SCHOOL
- ② HAMB DEN CONGREGATIONAL CH.
- ③ CHRISTIAN & MISSIONARY ALLIANCE CH.
- ④ HAMB DEN CEMETERY
- ⑤ HAMB DEN VOL. FIRE DEPT.
- ⑥ HAMB DEN TOWN HALL

## HAMB DEN TOWNSHIP

SCALE = 1" = 2000'  
 ROBERT E. PHILLIPS,  
 GEauga COUNTY ENGINEER

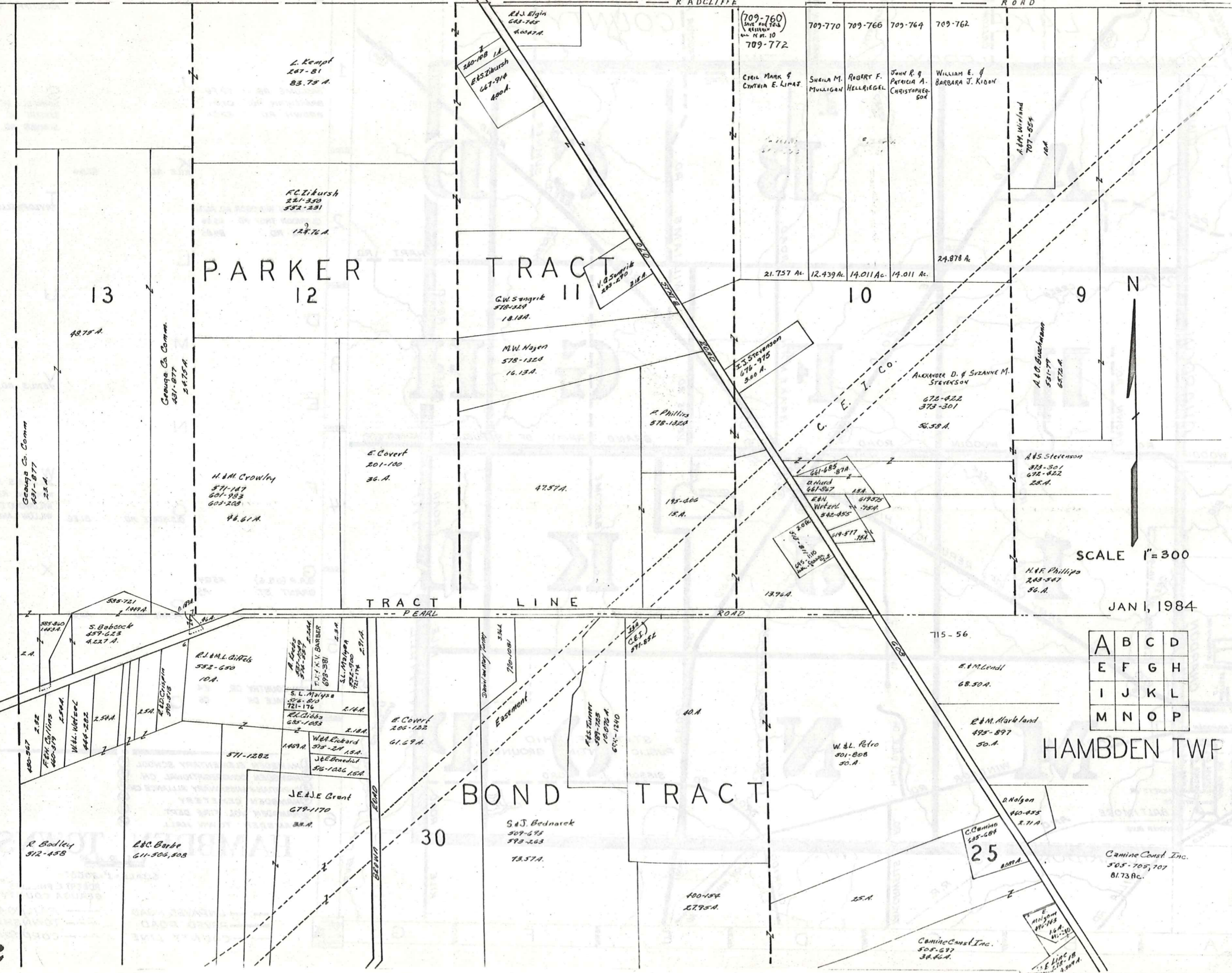
- - - UNPAVED ROAD  
 = = = PAVED ROAD  
 - - - COUNTY LINE  
 - - - RAILROAD  
 - - - TOWNSHIP LINE  
 - - - CORPORATION LINE



L A K E C O U N T Y

P  
T  
W  
O  
N  
R  
A  
C  
H  
C

R ADCLIFFE ROAD



PARKER TRACT II

BOND TRACT

HAMBDEN TWP

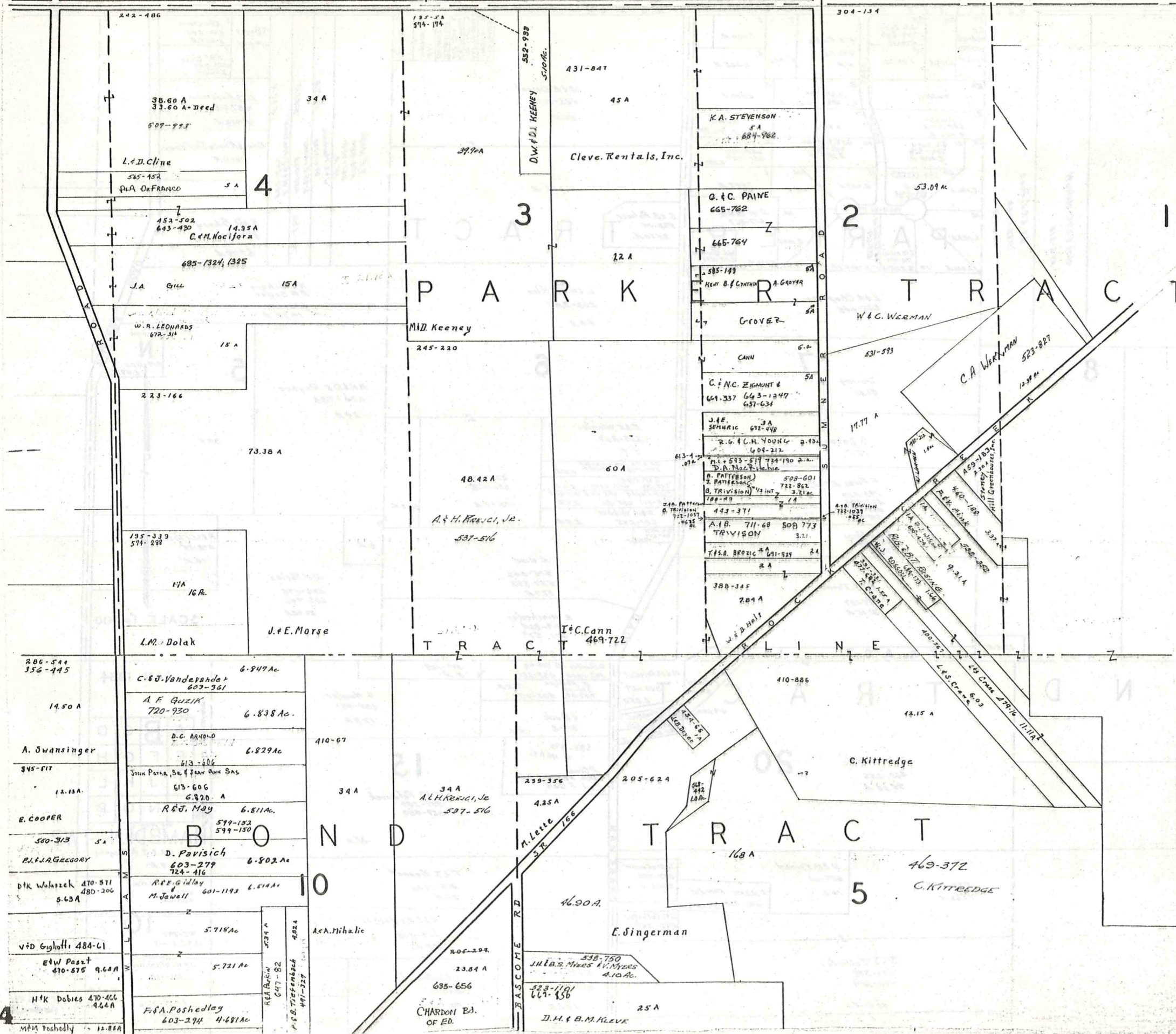
SCALE 1"=300

JAN I, 1984

|   |   |   |   |
|---|---|---|---|
| A | B | C | D |
| E | F | G | H |
| I | J | K | L |
| M | N | O | P |



L A K E C O U N T Y



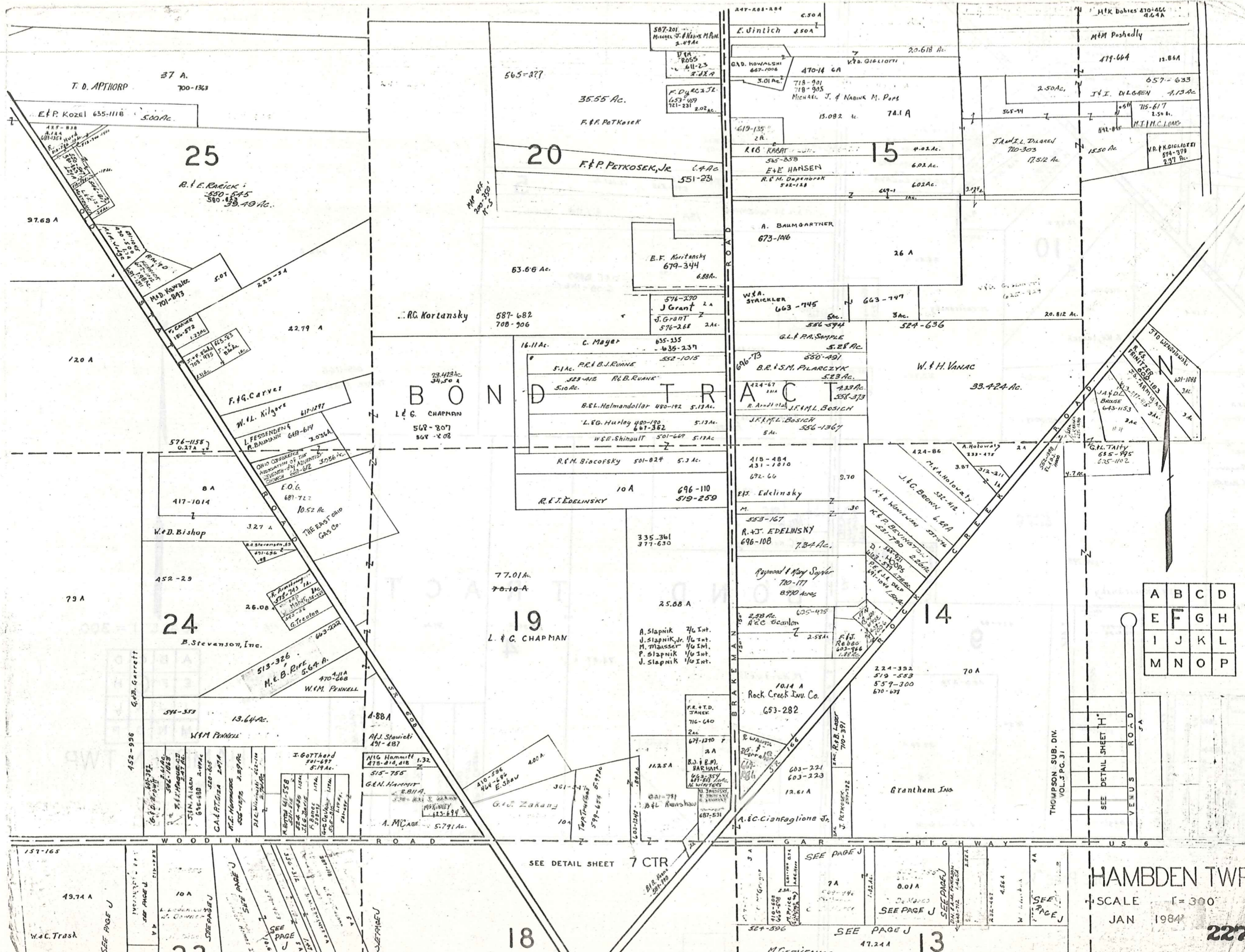
SCALE 1" = 300'  
JAN 1984

|   |   |   |   |
|---|---|---|---|
| A | B | C | D |
| E | F | G | H |
| I | J | K | L |
| M | N | O | P |

HAMB DEN TWP.







# BOND TRACT

|   |   |   |   |
|---|---|---|---|
| A | B | C | D |
| E | F | G | H |
| I | J | K | L |
| M | N | O | P |

HAMBDEN TWP

SCALE 1" = 300'

JAN 1984

227

SEE DETAIL SHEET 7 CTR

SEE PAGE J

SEE PAGE J

SEE PAGE J

SEE PAGE J

23

13

18

49.74 A  
W.C. Trask

M. GARVENIKA

47.24 A

WIM PENNELL  
13.64 Ac.  
513-326  
M.E.B. RIFE  
5.64 A.  
470-668  
WIM PENNELL

GEN. HAMMIT  
515-755  
478-818, 418 1.32  
519-887

GEO. ZARANY  
400 A.  
410-506  
444-696  
E. SHAW

ROCK CREEK INV. CO.  
653-282  
10.14 A

GRANTHEM INC.  
12.61 A  
603-221  
603-223

VENUS ROAD  
THOMPSON SUB. DIV.  
VOL. 3 PG. 31

T. D. APTHORP  
700-1363  
37 A.

25

20

15

24

19

14

157-165

WOODIN ROAD

GARTH HIGHWAY US 6

E.P. KOZEL 635-1118  
5.00 Ac.

R. E. RAECK  
530-545  
580-853  
39.49 Ac.

565-277  
35.55 Ac.  
F.F. PETKOSEK

F.F. PETKOSEK, JR.  
64 Ac.  
551-231

247-201-284  
C.50 A  
E. JINLICH 2.50 A

470-14 GA  
3.01 Ac.

15.082 Ac. 74.1 A

R. E. HANSEN  
602 Ac.

A. BAUMGARTNER  
673-146

26 A

E.F. MORITANSKY  
679-344  
6.88 A.

J. GRANT  
576-268 2 Ac.

C. MOYER  
655-335  
636-237

B.R. & S.M. PLARCZYK  
523 Ac.

J.K. & L. BOSICH  
556-1367

R.F. EDLINSKY  
696-108  
7.34 Ac.

25.88 A

335-361  
377-630

2.58 Ac.

603-221  
603-223

12.61 A

671-1270  
2 A

12.25 A

687-531

687-531

687-531

687-531

687-531

JAMES L. DILARD  
720-303  
17.52 Ac.

602 Ac.

602 Ac.

602 Ac.

602 Ac.

602 Ac.

602 Ac.

602 Ac.

602 Ac.

602 Ac.

602 Ac.

602 Ac.

602 Ac.

602 Ac.

602 Ac.

602 Ac.

602 Ac.

602 Ac.

602 Ac.

602 Ac.

602 Ac.

G.H. TAITTY  
635-945  
635-1102

635-945  
635-1102

635-945  
635-1102

635-945  
635-1102

635-945  
635-1102

635-945  
635-1102

635-945  
635-1102

635-945  
635-1102

635-945  
635-1102

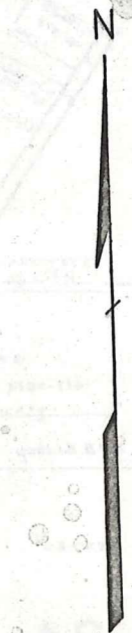
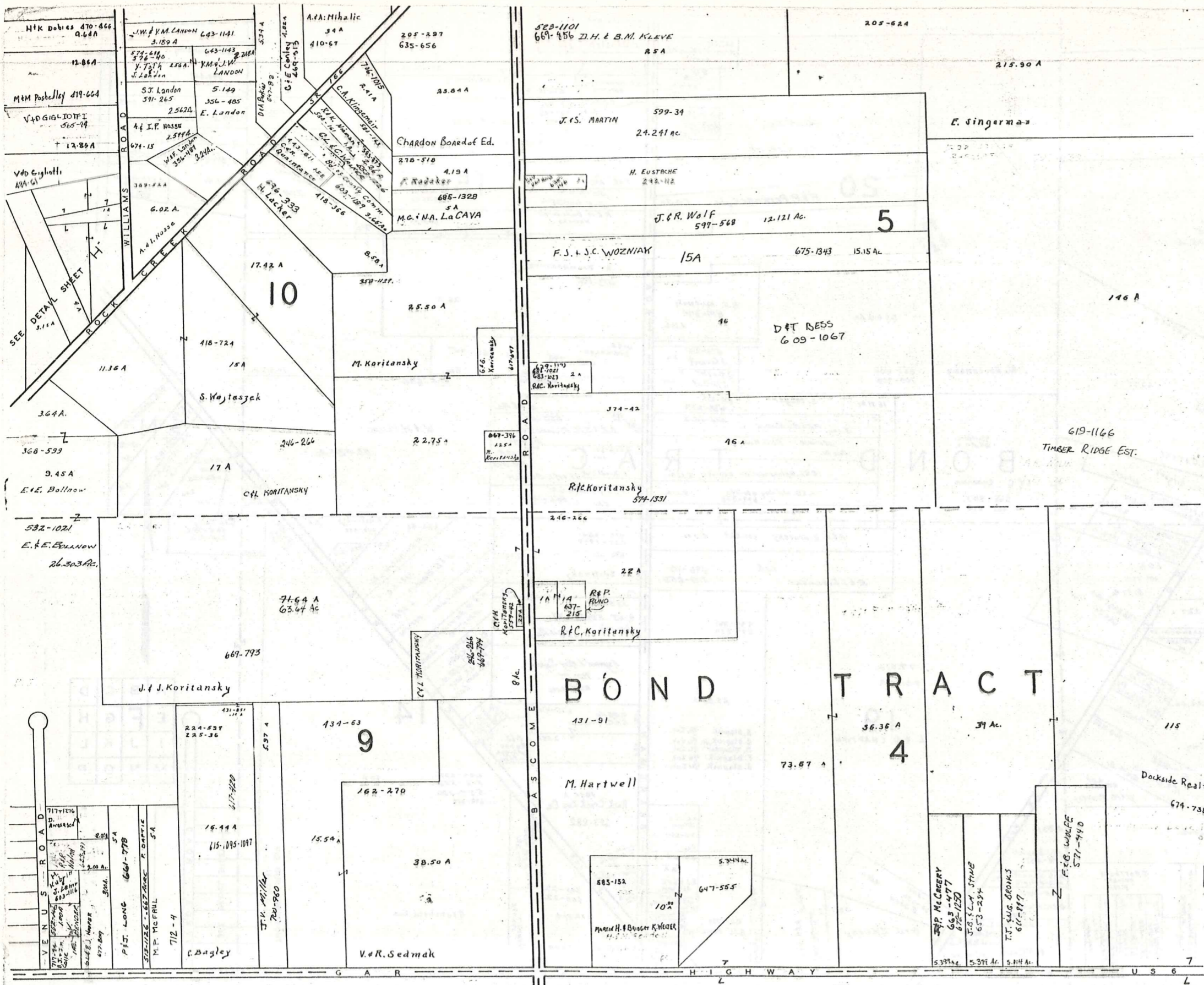
635-945  
635-1102

635-945  
635-1102

635-945  
635-1102

635-945  
635-1102

635-945  
635-1102

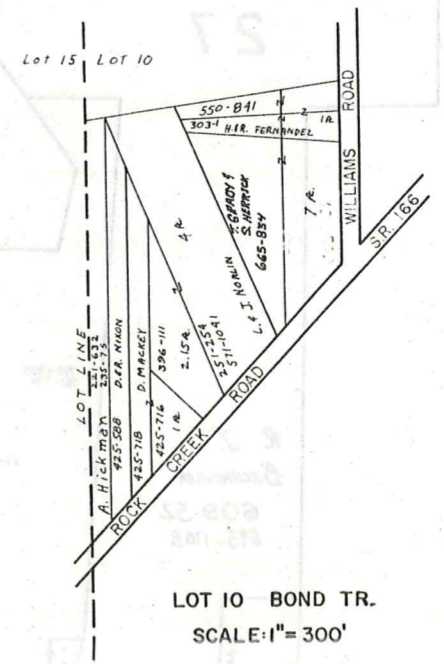
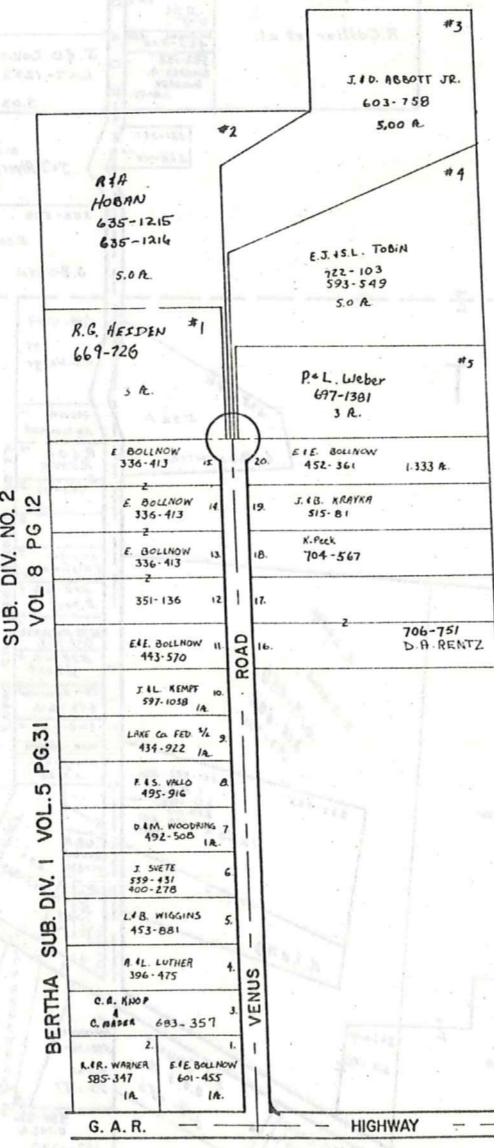
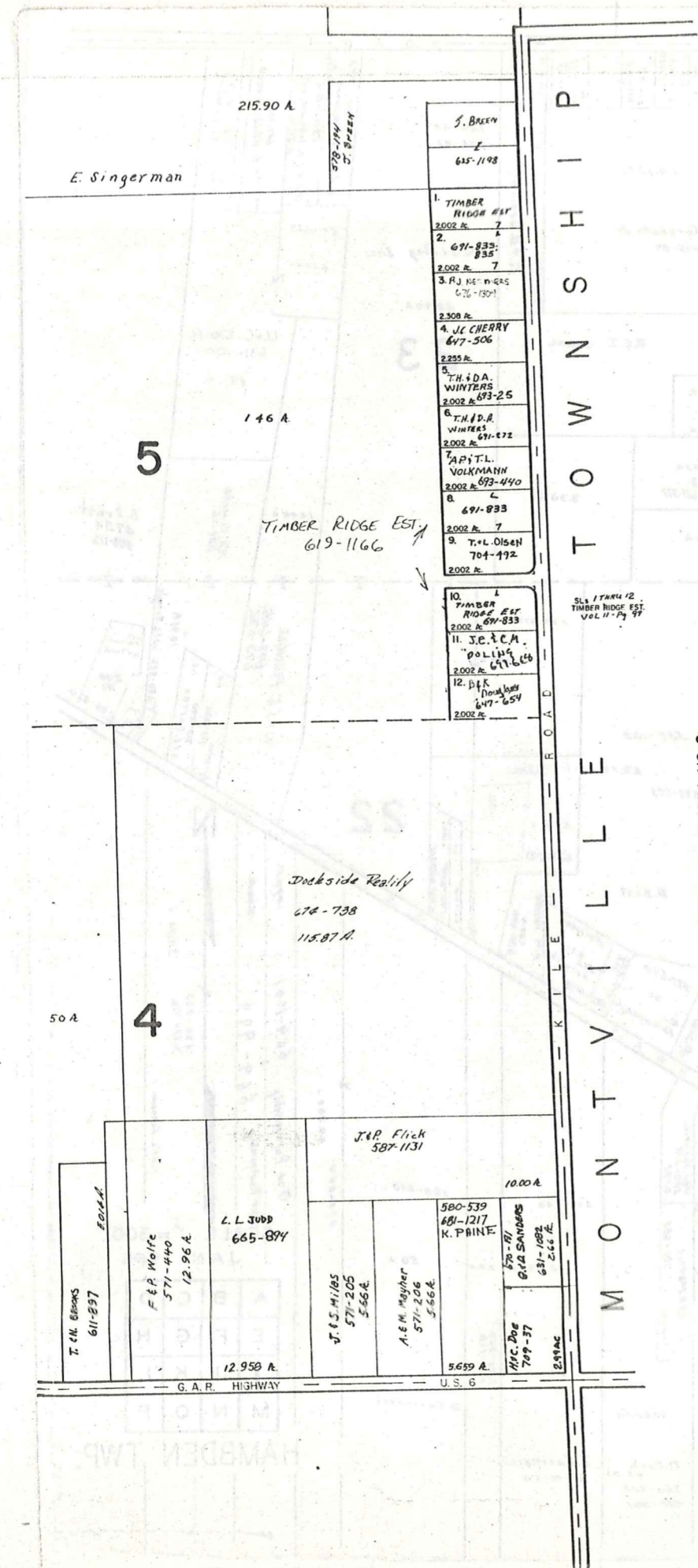


SCALE 1" = 300'

|   |   |   |   |
|---|---|---|---|
| A | B | C | D |
| E | F | G | H |
| I | J | K | L |
| M | N | O | P |

HAMB DEN TWP.  
JAN 1, 1984

SEE PAGE "K"



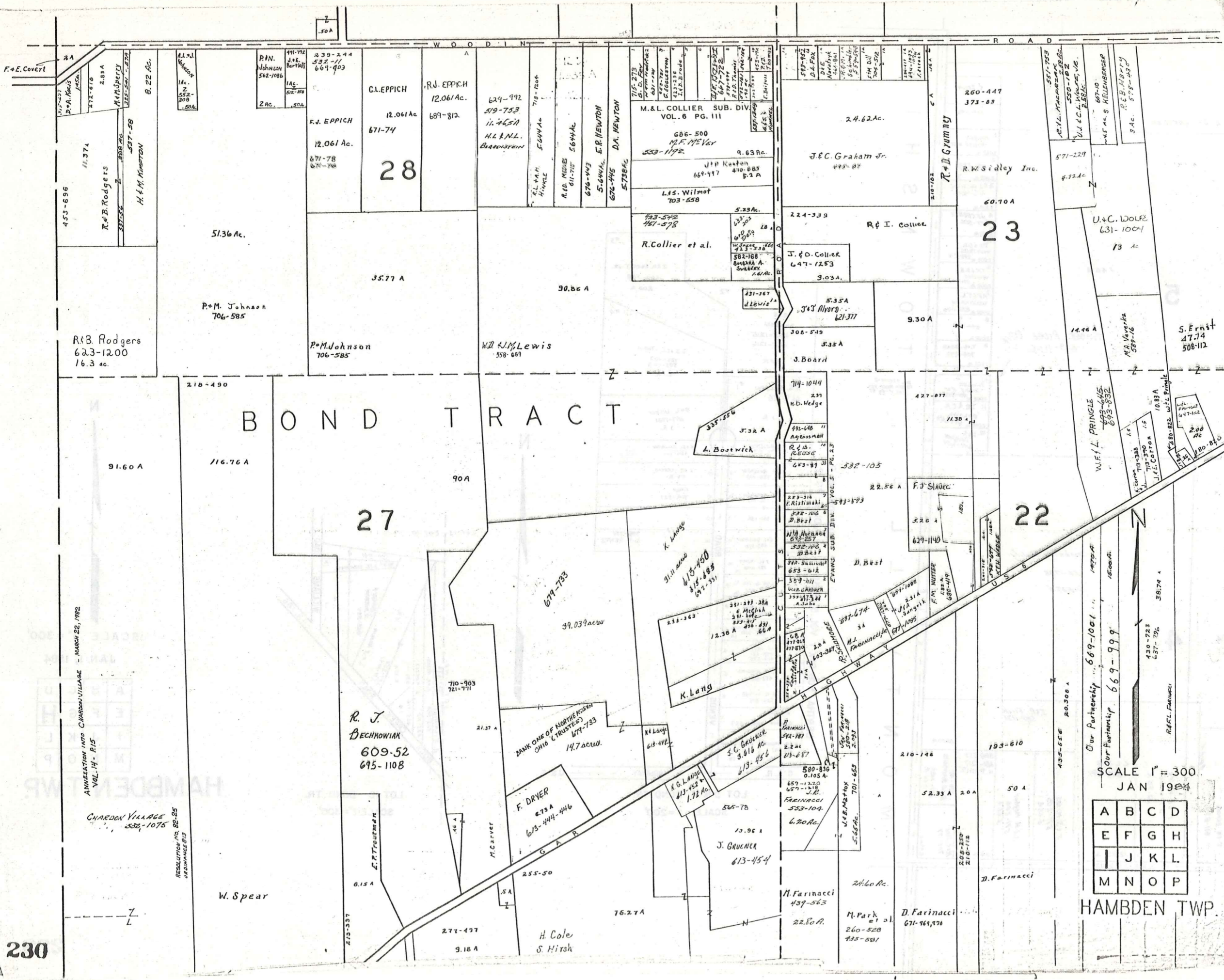
N

SCALE 1" = 300'

JAN. 1, 1984

|   |   |   |   |
|---|---|---|---|
| A | B | C | D |
| E | F | G | H |
| I | J | K | L |
| M | N | O | P |

HAMB DEN TWP.



BOND TRACT

27

28

23

22

|   |   |   |   |
|---|---|---|---|
| A | B | C | D |
| E | F | G | H |
| I | J | K | L |
| M | N | O | P |

HAMB DEN TWP.

SCALE 1" = 300  
JAN 1924

230

AMMUNITION INTO CHARDON VILLAGE - MARCH 22, 1922  
VOL. 14, P. 15

CHARDON VILLAGE  
536-1075

RESOLUTION NO. 82-25  
ORDINANCE 613

W. Spear

BANK ONE OF NORTHERN OHIO  
TRUSTEES  
679-733  
14.7 ac.

F. DRYER  
673A  
613-444-446

K. LANG  
613-452  
1.72 ac.

J. GRUENER  
613-454

M. FARINACCI  
439-563  
22.80 ac.

D. FARINACCI  
671-965, 976

R. J. BECHNOWIK  
609-52  
695-1108

C.L. EPPICH  
12.061 ac.  
671-74

R.J. EPPICH  
12.061 ac.  
689-812

P.M. JOHNSON  
706-585

W.D. LEWIS  
558-669

J. BOARD  
535A

R.W. SIBLEY INC.  
60.70A

S. ERNST  
477.74  
508-112

R.F.L. PRINGLE  
693-645  
695-832

Our Partnership 669-1001  
Our Partnership 669-999

1500 ft

38.74

430-723  
637-796

R.F.L. PRINGLE

1500 ft

38.74

430-723  
637-796

R.F.L. PRINGLE

1500 ft

38.74

430-723  
637-796

R.F.L. PRINGLE

1500 ft

38.74

430-723  
637-796

R.F.L. PRINGLE

1500 ft

38.74

430-723  
637-796

R.F.L. PRINGLE

1500 ft

38.74

430-723  
637-796

R.F.L. PRINGLE

1500 ft

38.74

430-723  
637-796

R.F.L. PRINGLE

1500 ft

38.74

430-723  
637-796

R.F.L. PRINGLE

1500 ft

38.74

430-723  
637-796

R.F.L. PRINGLE

1500 ft

38.74

430-723  
637-796

R.F.L. PRINGLE

1500 ft

38.74

430-723  
637-796

R.F.L. PRINGLE

1500 ft

38.74

430-723  
637-796

R.F.L. PRINGLE

1500 ft

38.74

430-723  
637-796

R.F.L. PRINGLE

1500 ft

38.74

430-723  
637-796

R.F.L. PRINGLE

1500 ft

38.74

430-723  
637-796

R.F.L. PRINGLE

1500 ft

38.74

430-723  
637-796

R.F.L. PRINGLE

1500 ft

38.74

430-723  
637-796

R.F.L. PRINGLE

1500 ft

38.74

430-723  
637-796

R.F.L. PRINGLE

1500 ft

38.74

430-723  
637-796

R.F.L. PRINGLE

1500 ft

38.74

430-723  
637-796

R.F.L. PRINGLE

1500 ft

38.74

430-723  
637-796

R.F.L. PRINGLE

1500 ft

38.74

430-723  
637-796

R.F.L. PRINGLE

1500 ft

38.74

430-723  
637-796

R.F.L. PRINGLE

1500 ft

38.74

430-723  
637-796

R.F.L. PRINGLE

1500 ft

38.74

430-723  
637-796

R.F.L. PRINGLE

1500 ft

38.74

430-723  
637-796

R.F.L. PRINGLE

1500 ft

38.74

430-723  
637-796

R.F.L. PRINGLE

1500 ft

38.74

430-723  
637-796

R.F.L. PRINGLE

1500 ft

38.74

430-723  
637-796

R.F.L. PRINGLE

1500 ft

38.74

430-723  
637-796

R.F.L. PRINGLE

1500 ft

38.74

430-723  
637-796

R.F.L. PRINGLE

1500 ft

38.74

430-723  
637-796

R.F.L. PRINGLE

1500 ft

38.74

430-723  
637-796

R.F.L. PRINGLE

1500 ft

38.74

430-723  
637-796

R.F.L. PRINGLE

1500 ft

38.74

430-723  
637-796

R.F.L. PRINGLE

1500 ft

38.74

430-723  
637-796

R.F.L. PRINGLE

1500 ft

38.74

430-723  
637-796

R.F.L. PRINGLE

1500 ft

38.74

430-723  
637-796

R.F.L. PRINGLE

1500 ft

38.74

430-723  
637-796

R.F.L. PRINGLE

1500 ft

38.74

430-723  
637-796

R.F.L. PRINGLE

1500 ft

38.74

430-723  
637-796

R.F.L. PRINGLE

1500 ft

38.74

430-723  
637-796

R.F.L. PRINGLE

1500 ft

38.74

430-723  
637-796

R.F.L. PRINGLE

1500 ft

38.74

430-723  
637-796

R.F.L. PRINGLE

1500 ft

38.74

430-723  
637-796

R.F.L. PRINGLE

1500 ft

38.74

430-723  
637-796

R.F.L. PRINGLE

1500 ft

38.74

430-723  
637-796

R.F.L. PRINGLE

1500 ft

38.74

430-723  
637-796

R.F.L. PRINGLE

1500 ft

38.74

430-723  
637-796

R.F.L. PRINGLE

1500 ft

38.74

430-723  
637-796

R.F.L. PRINGLE

1500 ft

38.74

430-723  
637-796

R.F.L. PRINGLE

1500 ft

38.74

430-723  
637-796

R.F.L. PRINGLE

1500 ft

38.74

430-723  
637-796

R.F.L. PRINGLE

1500 ft

38.74

430-723  
637-796

R.F.L. PRINGLE

1500 ft

38.74

430-723  
637-796

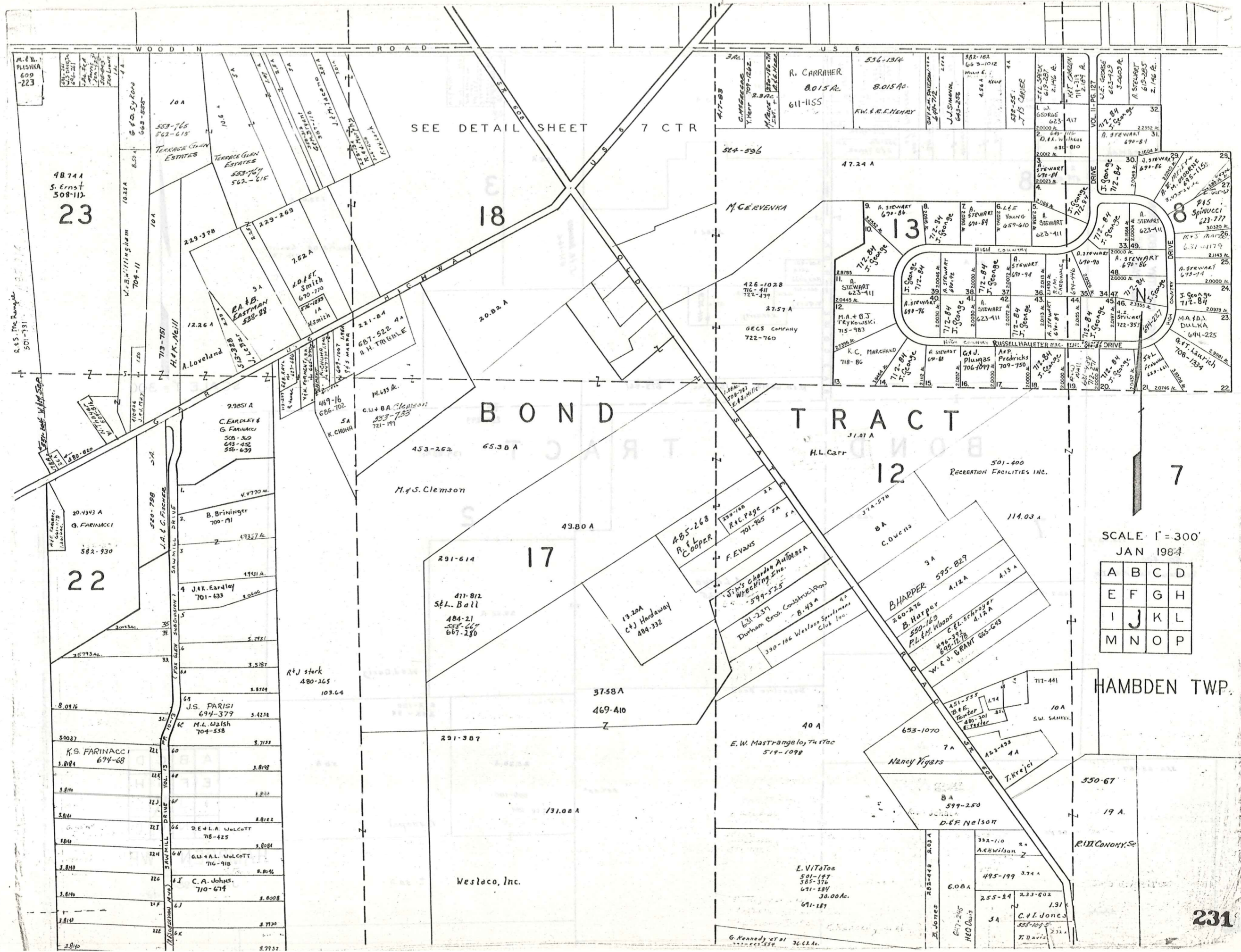
R.F.L. PRINGLE

1500 ft

38.74

430-723  
637-796

R.F.L. PRINGLE



M. & B. PISHKA  
609  
223

48744  
S. Ernst  
508-112  
**23**

**22**

**18**

**BOND TRACT**

**17**

**12**

**13**

**7**

SCALE 1" = 300'  
JAN 1984

|   |   |   |   |
|---|---|---|---|
| A | B | C | D |
| E | F | G | H |
| I | J | K | L |
| M | N | O | P |

HAMBDEN TWP.

**231**

R. S. McRumpke  
501-731

W. B. W. Williams  
704-11

Q. Farinacci  
582-930

K. S. Farinacci  
674-68

J. S. Parisi  
694-379

D. E. & L. A. Wolcott  
718-425

C. A. Johns  
710-674

533-765  
562-615

229-378

12.26 A

9.9851 A

20.443 A

8.09 A

500.37

3.814

3.814

10 A

10.85 A

7.62 A

4.4770 A

4.4770 A

3.5287

3.5287

3.8084

3.8084

10.6 A

2.29-269

2.21-84

4.4770 A

4.4770 A

3.5287

3.5287

3.8084

3.8084

10.6 A

2.29-269

2.21-84

4.4770 A

4.4770 A

3.5287

3.5287

3.8084

3.8084

10.6 A

2.29-269

2.21-84

4.4770 A

4.4770 A

3.5287

3.5287

3.8084

3.8084

10.6 A

2.29-269

2.21-84

4.4770 A

4.4770 A

3.5287

3.5287

3.8084

3.8084

10.6 A

2.29-269

2.21-84

4.4770 A

4.4770 A

3.5287

3.5287

3.8084

3.8084

10.6 A

2.29-269

2.21-84

4.4770 A

4.4770 A

3.5287

3.5287

3.8084

3.8084

10.6 A

2.29-269

2.21-84

4.4770 A

4.4770 A

3.5287

3.5287

3.8084

3.8084

10.6 A

2.29-269

2.21-84

4.4770 A

4.4770 A

3.5287

3.5287

3.8084

3.8084

10.6 A

2.29-269

2.21-84

4.4770 A

4.4770 A

3.5287

3.5287

3.8084

3.8084

10.6 A

2.29-269

2.21-84

4.4770 A

4.4770 A

3.5287

3.5287

3.8084

3.8084

10.6 A

2.29-269

2.21-84

4.4770 A

4.4770 A

3.5287

3.5287

3.8084

3.8084

10.6 A

2.29-269

2.21-84

4.4770 A

4.4770 A

3.5287

3.5287

3.8084

3.8084

10.6 A

2.29-269

2.21-84

4.4770 A

4.4770 A

3.5287

3.5287

3.8084

3.8084

10.6 A

2.29-269

2.21-84

4.4770 A

4.4770 A

3.5287

3.5287

3.8084

3.8084

10.6 A

2.29-269

2.21-84

4.4770 A

4.4770 A

3.5287

3.5287

3.8084

3.8084

10.6 A

2.29-269

2.21-84

4.4770 A

4.4770 A

3.5287

3.5287

3.8084

3.8084

10.6 A

2.29-269

2.21-84

4.4770 A

4.4770 A

3.5287

3.5287

3.8084

3.8084

10.6 A

2.29-269

2.21-84

4.4770 A

4.4770 A

3.5287

3.5287

3.8084

3.8084

10.6 A

2.29-269

2.21-84

4.4770 A

4.4770 A

3.5287

3.5287

3.8084

3.8084

10.6 A

2.29-269

2.21-84

4.4770 A

4.4770 A

3.5287

3.5287

3.8084

3.8084

10.6 A

2.29-269

2.21-84

4.4770 A

4.4770 A

3.5287

3.5287

3.8084

3.8084

10.6 A

2.29-269

2.21-84

4.4770 A

4.4770 A

3.5287

3.5287

3.8084

3.8084

10.6 A

2.29-269

2.21-84

4.4770 A

4.4770 A

3.5287

3.5287

3.8084

3.8084

10.6 A

2.29-269

2.21-84

4.4770 A

4.4770 A

3.5287

3.5287

3.8084

3.8084

10.6 A

2.29-269

2.21-84

4.4770 A

4.4770 A

3.5287

3.5287

3.8084

3.8084

10.6 A

2.29-269

2.21-84

4.4770 A

4.4770 A

3.5287

3.5287

3.8084

3.8084

10.6 A

2.29-269

2.21-84

4.4770 A

4.4770 A

223-102  
V. Sedmak  
661-587  
GARNEY ET AL.  
L.A. H.N.J.  
BOSTAM  
48-077  
G.P.M. McNeely  
702-501  
420-128  
J.A.A.C.  
721-786  
S.A. STURM - 60-501 2A  
A.D. PIWARSKI  
653-402  
K. HARTWELL  
645-352  
653-489  
D. GERTZ  
495-13 1-87A  
495-61  
491-025  
E.B. TAYLOR 16A  
352-546  
E.B. TAYLOR 2A

223-148  
479-405-414  
8  
82 A  
M. Judd

431-91  
M. HARTWELL  
40 A  
37.84 A  
308-461  
L.41A  
R. J. Judd  
400-811  
V. Gertz  
400-813  
E.K. Gertz  
3734  
G.S. JIP

254-299  
770.0 A  
DOCKSIDE REALTY  
674-738  
J. H. BROWARD  
611-166  
3 A

N.H. GERTZ  
15.34 Ac.  
673-561

# BOND TRACT

7  
168 A  
M. & A. Longo  
599-425  
427-993

2  
139.28 Ac.  
29.96 A  
W. J. Gertz  
254-299

114.03 A  
501-400  
RECREATION FACILITIES INC.

356-65-67  
74.00 A  
State of Ohio

23.20 A  
609-1051  
G. R. RHY  
M. Snopel  
212-190  
235-34  
50 A  
± 50 A



SCALE 1" = 300

|   |   |   |   |
|---|---|---|---|
| A | B | C | D |
| E | F | G | H |
| I | J | K | L |
| M | N | O | P |

HAMBDEN TWP.  
JAN 1984

G A R HIGHWAY US 6

3

170.00 A.

Dockside Realty  
679-238

BOND TRACT

P  
H  
I  
S  
T  
O  
W  
N  
R  
O  
A  
D  
L  
L  
E  
L  
L  
E  
T  
V  
I  
L  
L  
E  
M  
O  
N  
T

|                              |          |
|------------------------------|----------|
| 647-435                      | 5A.      |
| D.M. & P.M. CORWON           |          |
| 430-952                      | 4.98 A.  |
| R. & B. Grant                |          |
| R. & D. SUSTERIC             |          |
| 657-261                      | 4.98 A.  |
| R&E CRONBIE JR.              |          |
| 657-263                      | 4.98 A.  |
| 693-629                      |          |
| J. Gardini                   |          |
| 259-219                      | 4.98 Ac. |
| R. Kovaras                   |          |
| 460-398                      | 4.98 Ac. |
| M. & H. Tomasin              |          |
| 460-480                      | 4.98 Ac. |
| DTC SAEIJA                   |          |
| 621-699                      | 4.98 Ac. |
| 424-826                      | 880-199  |
| A.M. Burnett                 |          |
| H Berganski 477-502 4.98 Ac. |          |

212-190  
255-94

50 A.

M. Snopel

260-271

50 Ac.

S. & J. Snopel

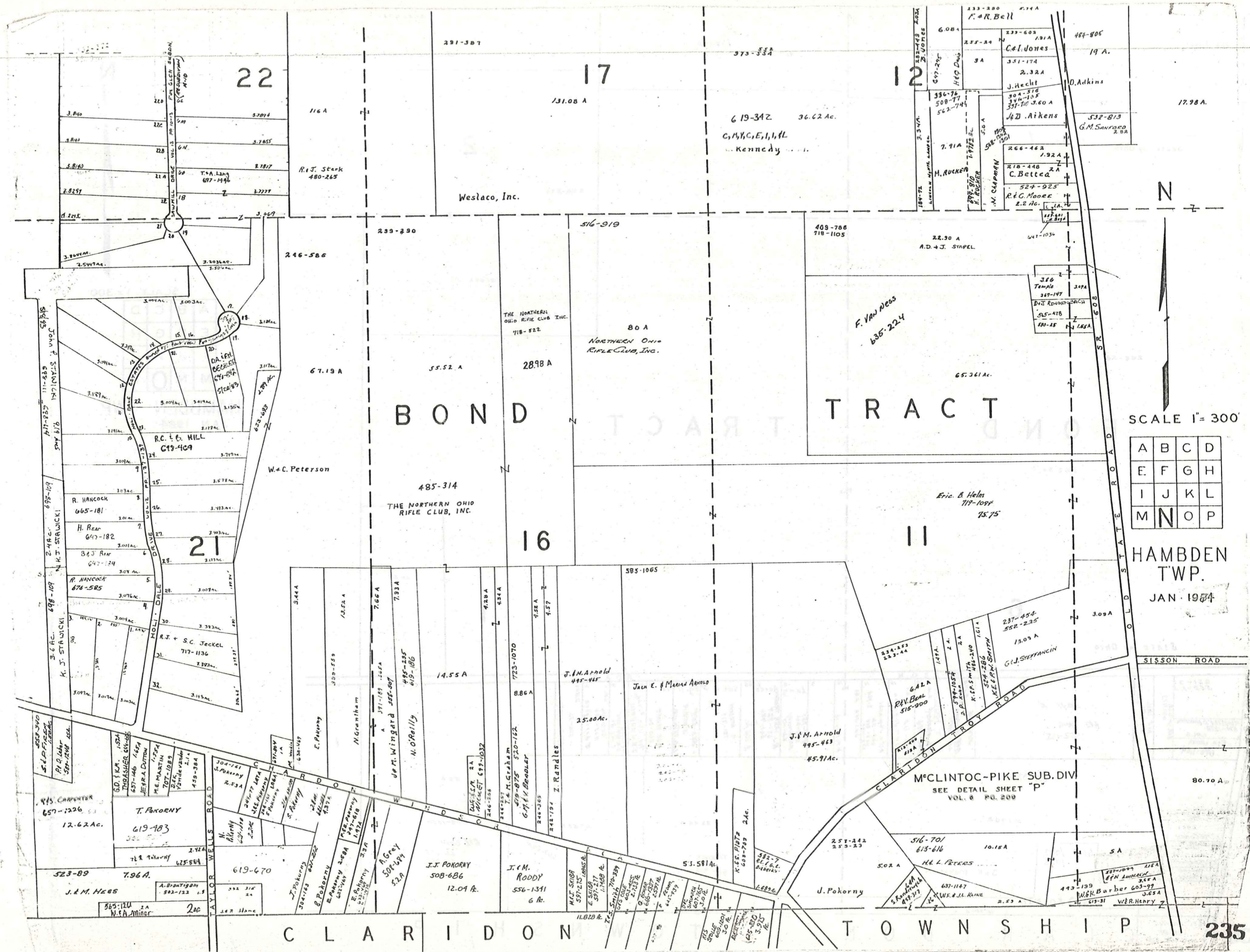


SCALE 1" = 300'

|   |   |   |   |
|---|---|---|---|
| A | B | C | D |
| E | F | G | H |
| I | J | K | L |
| M | N | O | P |

HAMBDEN TWP.  
JAN. 1984





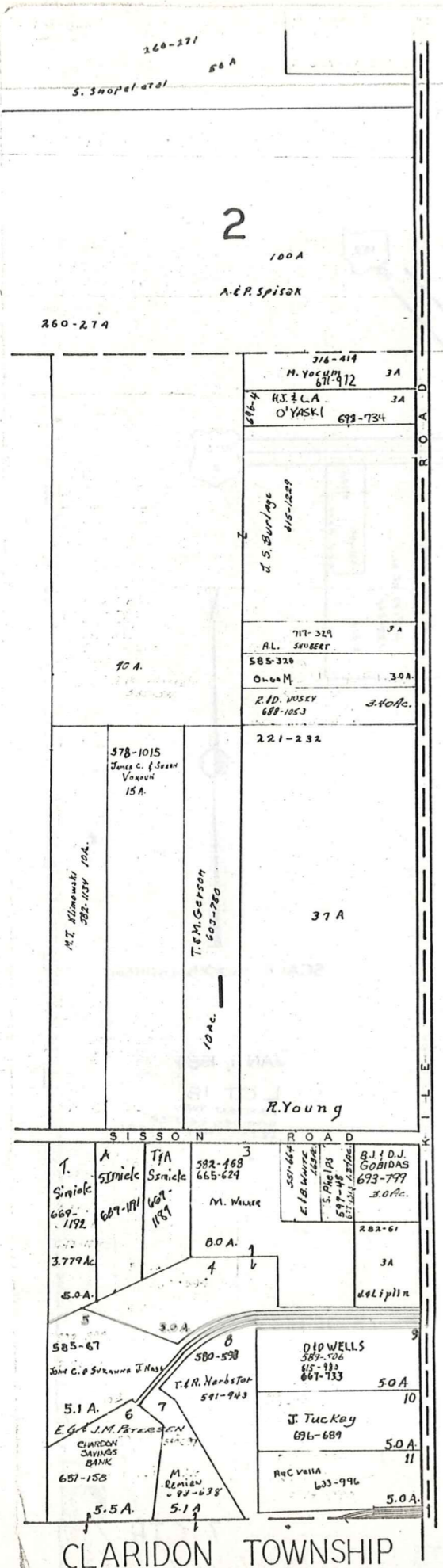
SCALE 1" = 300'

|   |   |   |   |
|---|---|---|---|
| A | B | C | D |
| E | F | G | H |
| I | J | K | L |
| M | N | O | P |

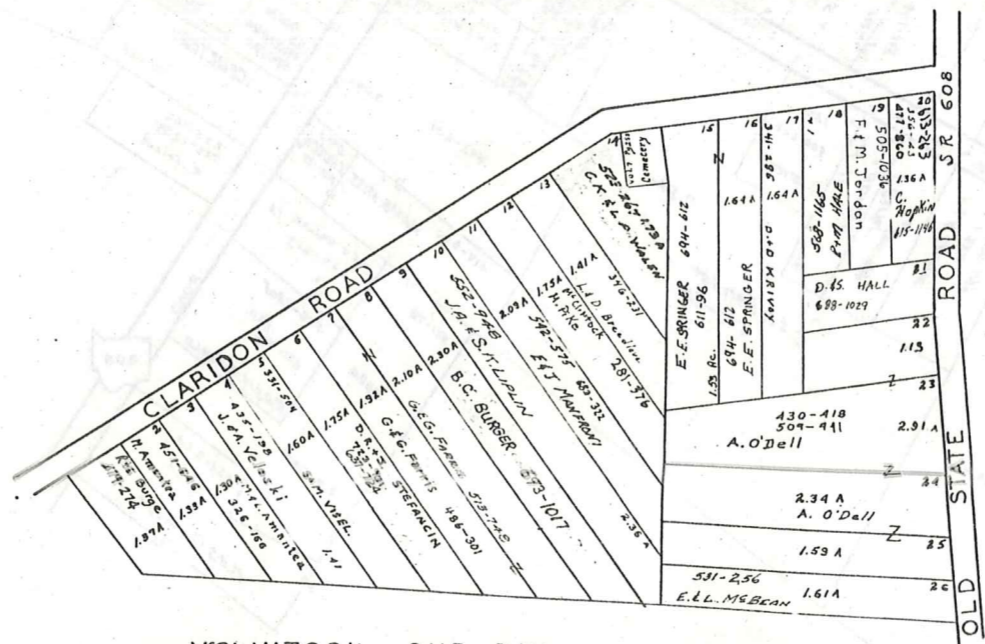
HAMB DEN  
TWP.  
JAN 1954

C L A R I D O N T O W N S H I P 235





MONTVILLE TOWNSHIP



MCCLINTOCK SUB. DIV.  
 VOL. 6 PG. 209  
 LOT 6 & 11 BOND TR.  
 Scale 1"=200'

SCALE 1" = 300'  
 JAN 1984

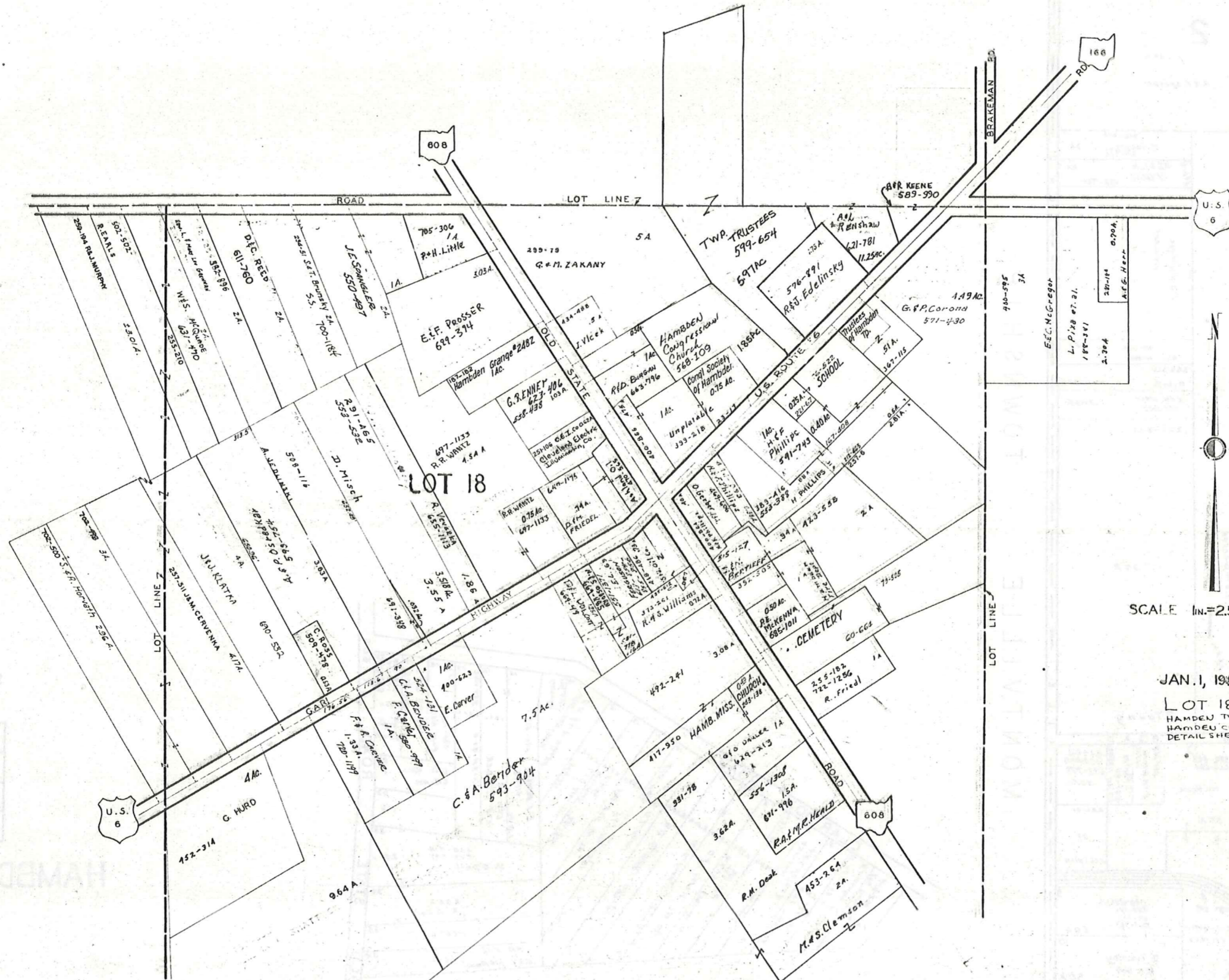
|   |   |   |   |
|---|---|---|---|
| A | B | C | D |
| E | F | G | H |
| I | J | K | L |
| M | N | O | P |

HAMB DEN TWP.

HAMB DEN CENTER  
AND VICINITY

# HAMB DEN TP.

HAMB DEN CENTER  
AND VICINITY



SCALE 1 in. = 2.5 ch. or 165 ft.

JAN. 1, 1924

LOT 18  
HAMB DEN TWP.  
HAMB DEN CENTER  
DETAIL SHEET 7 CTR.

# Explanation and Use Sheet for Geauga County, Ohio

SAMPLE (PARTIAL) COUNTY INDEX MAP



- Township Boundary
- Township Name
- Village Boundary
- Village Name
- Tract Lot Number
- Street Name
- Acreage
- Deed Book & Page
- Owners Name
- Denotes Continous Ownership

SAMPLE (PARTIAL) MAP PAGE



- Map Page Number
- Village Name
- Village Boundary
- Township Name

SAMPLE (PARTIAL) MUNICIPALITY INDEX MAP



- Street Name
- Village Name
- Township Name

## USE OF THE MAP VOLUME

1. LOCATE THE GENERAL AREA OF INTEREST ON THE COUNTY INDEX MAP, ATLAS PAGE 'B', AND NOTE THE MUNICIPALITY NAME (TOWNSHIP OR VILLAGE).
2. REFER TO THE TABLE OF CONTENTS, ATLAS PAGE 'C', AND NOTE THE BEGINNING ATLAS PAGE NUMBER FOR THE MUNICIPALITY OF INTEREST.
3. TURN TO THE PAGE INDICATED. ON THIS PAGE WILL APPEAR AN INDEX MAP FOR THAT MUNICIPALITY.
4. LOCATE THE GENERAL AREA OF INTEREST AND NOTE THE MAP PAGE NUMBER. THIS MAY BE EITHER A LETTER OR A NUMBER.
5. MAP PAGES ARE IN ALPHABETICAL (OR NUMERICAL) SEQUENCE FOLLOWING THE MUNICIPALITY INDEX MAP. FOLLOW SEQUENCE TO THE MAP PAGE INDICATED.
6. LOCATE SPECIFIC PARCEL OF INTEREST AND NOTE THE DESIRED INFORMATION.

NOTE: ON SOME MAPS YOU MAY BE REFERRED TO A DETAIL SHEET SHOWING AN ENLARGEMENT OF THE AREA. THESE MAPS ARE FOUND AT THE END OF THE REGULAR MAP PAGES IN EACH MUNICIPALITY IN EITHER ALPHABETICAL OR NUMERICAL SEQUENCE.

NOTE: CHARDON VILLAGE HAS TITLE SHEETS. TO LOCATE OWNERS NAME, NOTE THE PARCEL NUMBER, REFER TO THE TITLE PAGE FOLLOWING THE MAP OF INTEREST, FOLLOW NUMERICAL SEQUENCE TO THE PARCEL NUMBER OF INTEREST AND NOTE THE DESIRED INFORMATION. IN ALL OTHER MUNICIPALITIES THE OWNERS NAME APPEARS ON THE MAP PAGE.

This book is the property of REAL ESTATE DATA, INC. and is distributed by REDI under a leasing arrangement requiring return to REDI upon termination of the lease. REDI reserves the right to reclaim this book if found in the possession of any firm or person where possession was obtained through any unauthorized source.